

## **Installing SMAP Programs**

### **Minimum System Requirements**

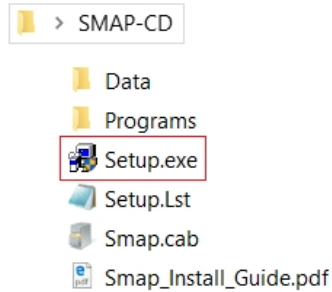
- ✓ Windows 64 bit operating system
- ✓ Intel Pentium 4 or AMD processors
- ✓ 8 GB Ram with 30 GB free space in Drive C
- ✓ SVGA monitor

### **Installation Procedure**

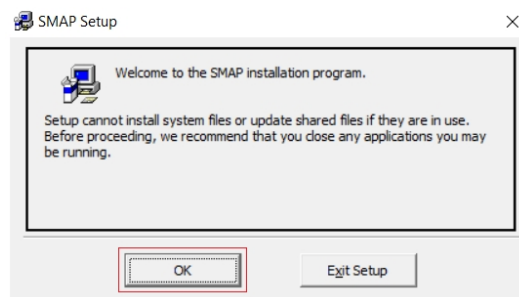
1. Uninstall if there are pre-existing SMAP programs.  
To uninstall SMAP programs, remove following program using Add/Remove in Control Panel:  
SMAP  
Delete following folder and file if they are existing:  
C:\Program Files (x86)\Smap  
C:\Windows\Setup1.exe  
Rename or delete following folders if they are existing:  
C:\SMAP  
C:\SmapKey  
C:\SMAP-CD
2. Download SMAP programs from the Download section of [www.ComtecResearch.com](http://www.ComtecResearch.com)  
Ex: Smap-CD.zip, Smap-3D-Set.zip, or Smap-W2.zip
3. Unzip downloaded SMAP programs

## 2 Installing SMAP Programs

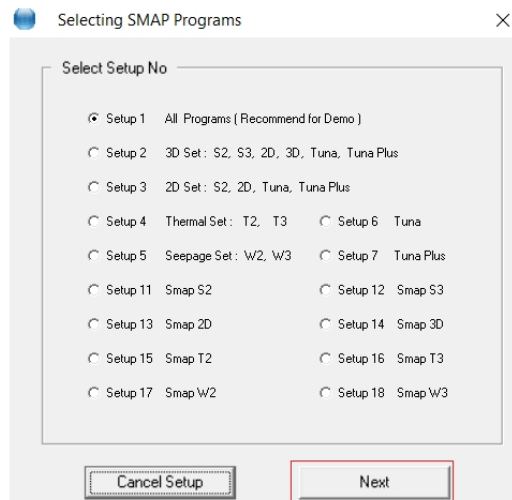
4. Double-click **Setup.exe**



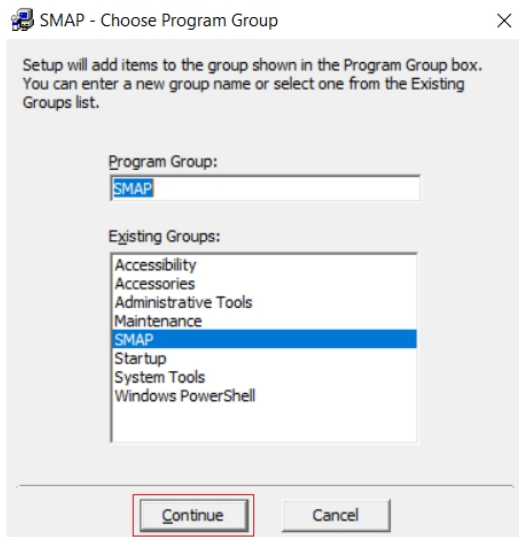
5. Click **OK**



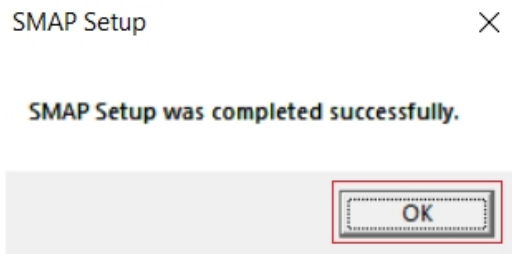
6. Click **Next**  
It will take few minutes.  
Wait until next step.  
Step 6 will be displayed  
only when Setup No = 1.



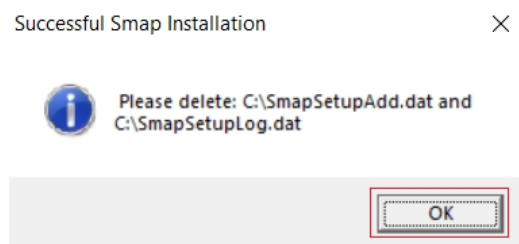
7. Click **Continue**



8. Click **OK**



9. Click **OK**



10. Double Click

C:\SmapKey\KeyCheck.exe

Note:

Following two log files will be generated once finished:

C:\SmapSetupAdd.dat

C:\SmapSetupLog.dat

If Smap Installation is successful, delete these two files.

If Smap Installation is not successful,  
follow the instruction in SmapSetupAdd.dat.

If you still have problems with Smap Installation,  
send these two files to [Support@ComtecResearch.co.kr](mailto:Support@ComtecResearch.co.kr)

For TUNA and TUNA Plus,  
Minimum System Requirement is Windows 32 bit.

Once Smap installation is completed  
and you can not see the Smap icon on the Desktop,  
right click the file [c:\Smap\Ct\Ctmenu\Smap.exe](#)  
and select [Send to > Desktop \(create shortcut\)](#).

 Smap icon